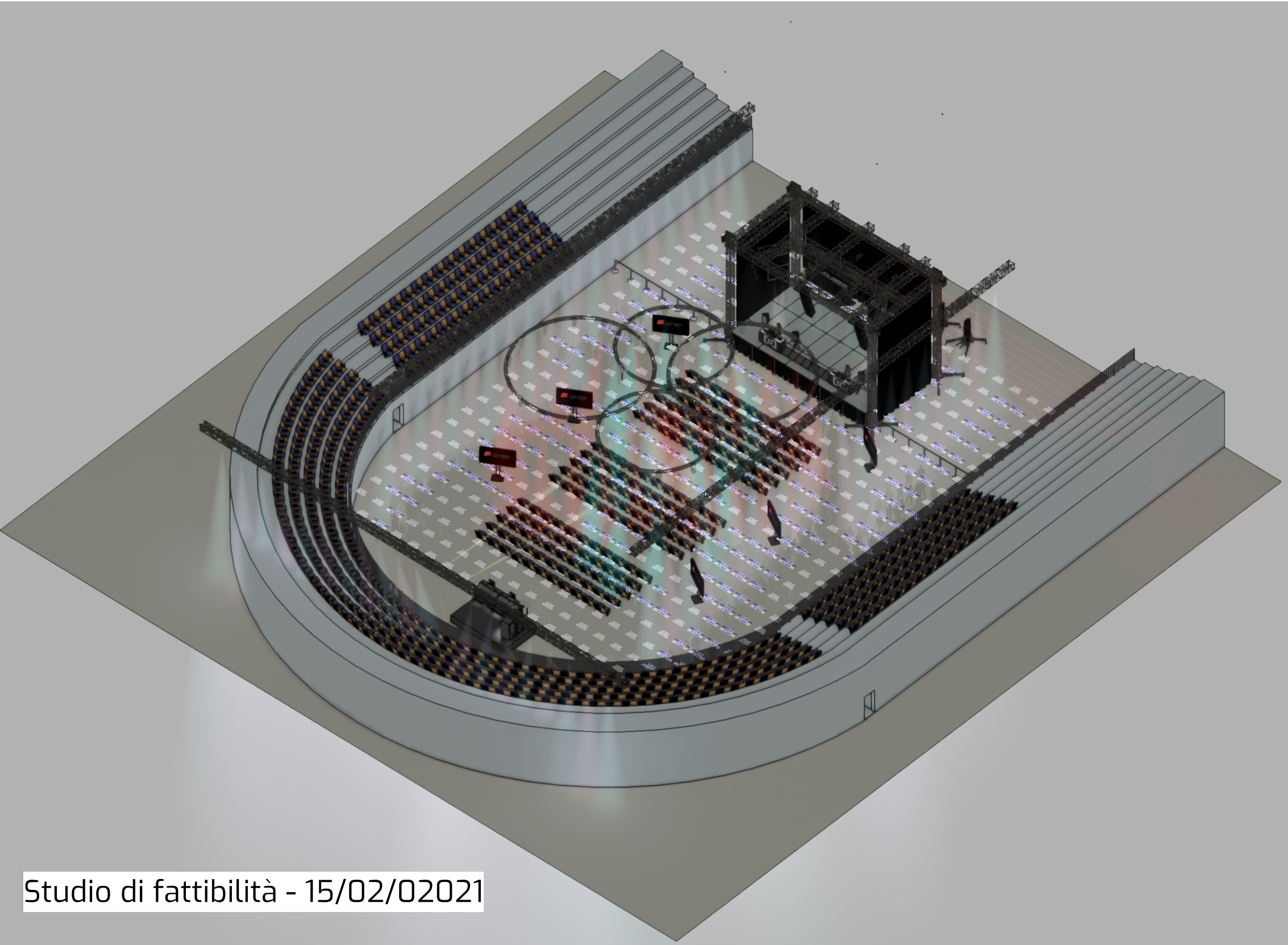
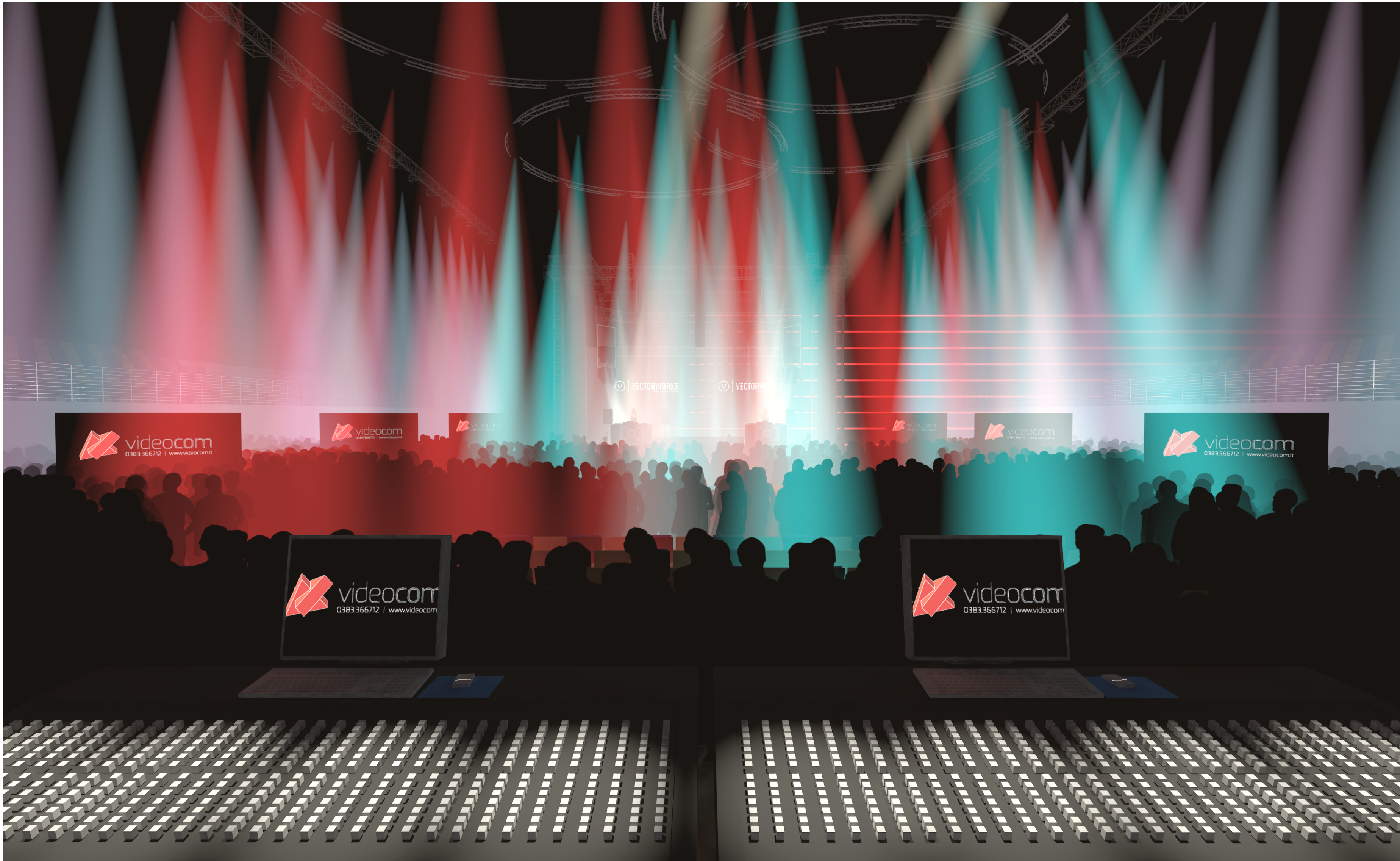
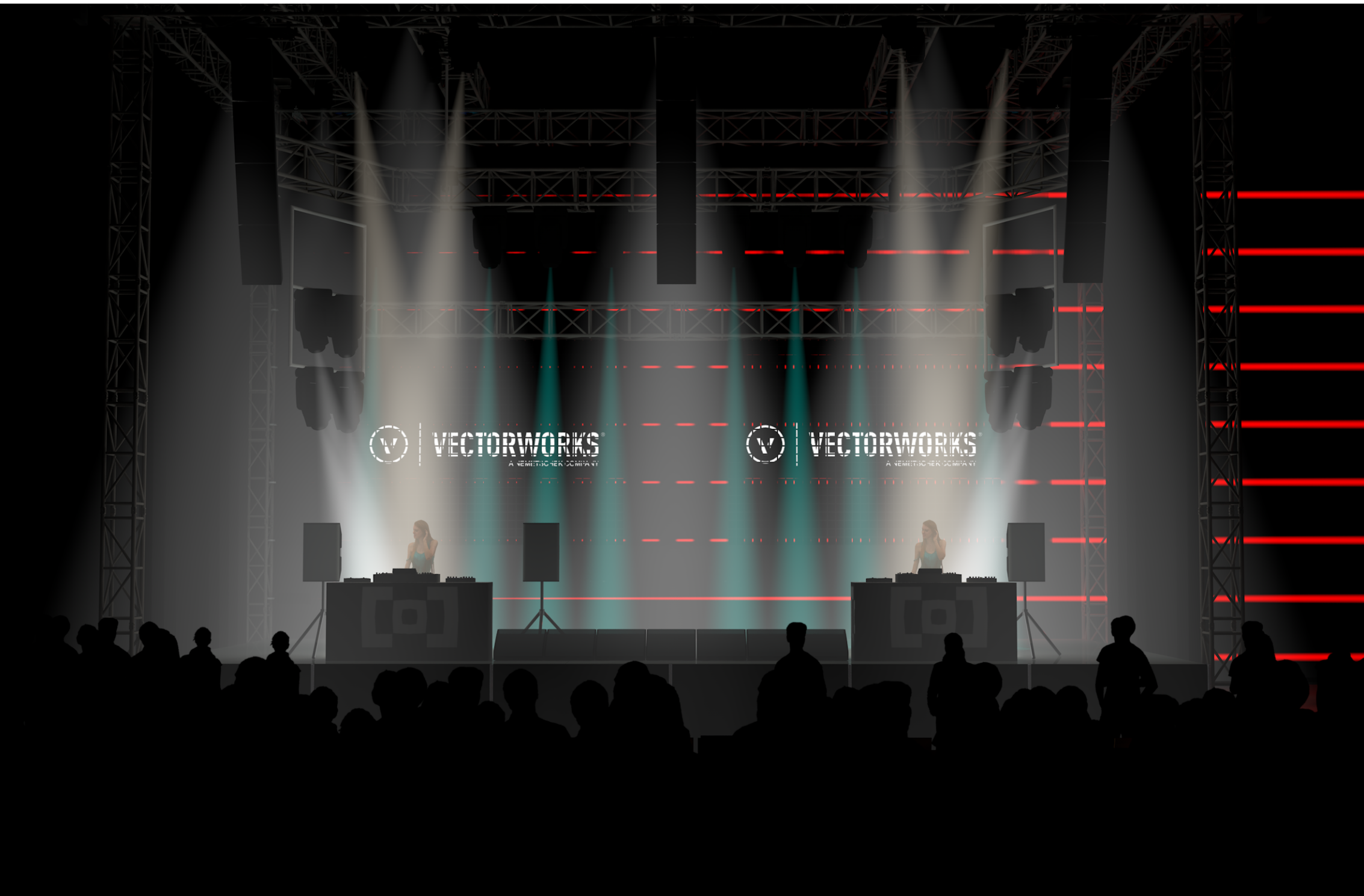


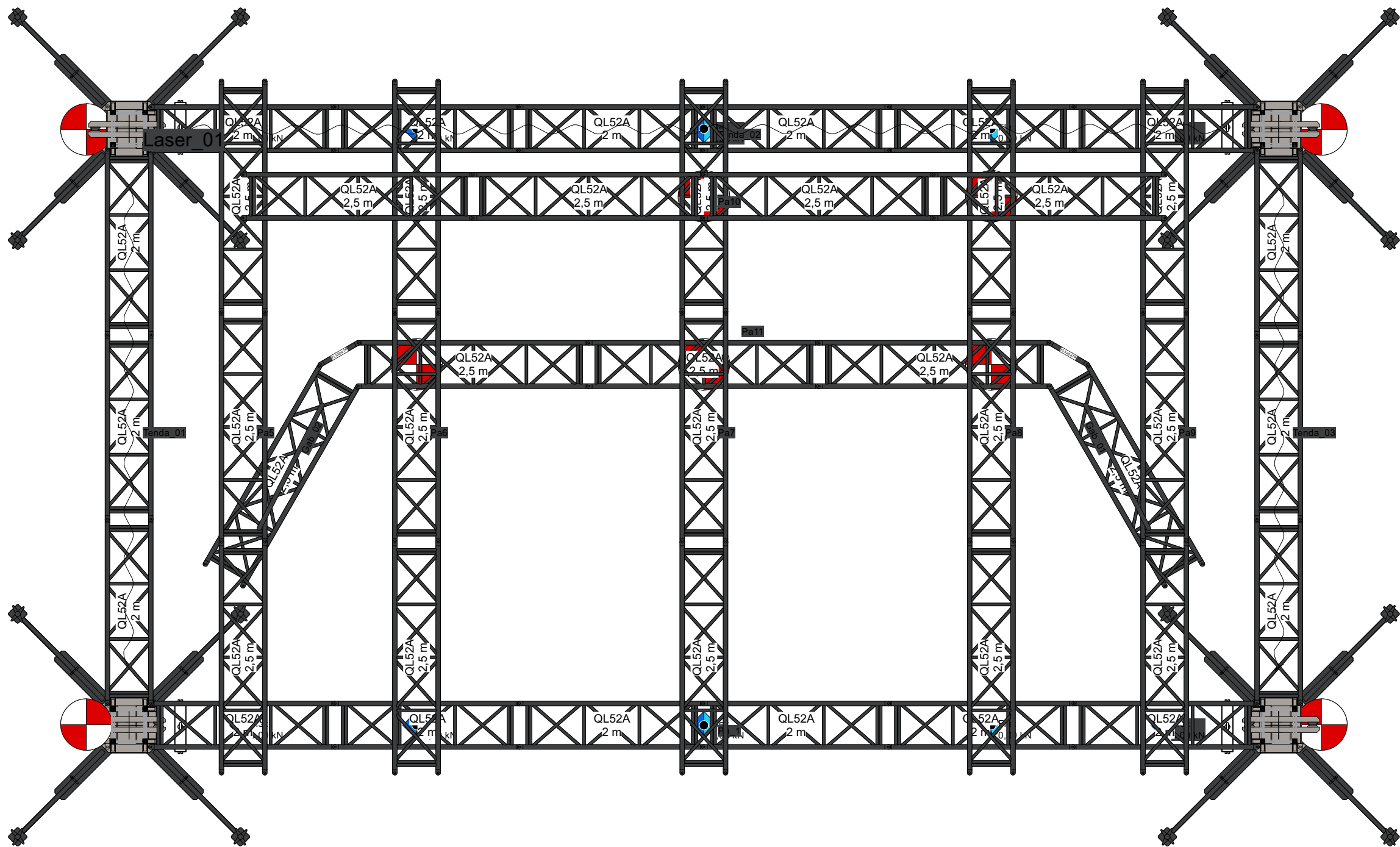
committente: Jordan Peele				
oggetto: Videocom Arena				
descrizione tavola: [Prospettive]		revisione: Verifica funzionalità base spotlight		
ID: SV_10	scale:	controllo:	data: 15/02/21	
videocom 0383.366712 www.videocom.it		il direttore lavori:		tavola: 1 di 7



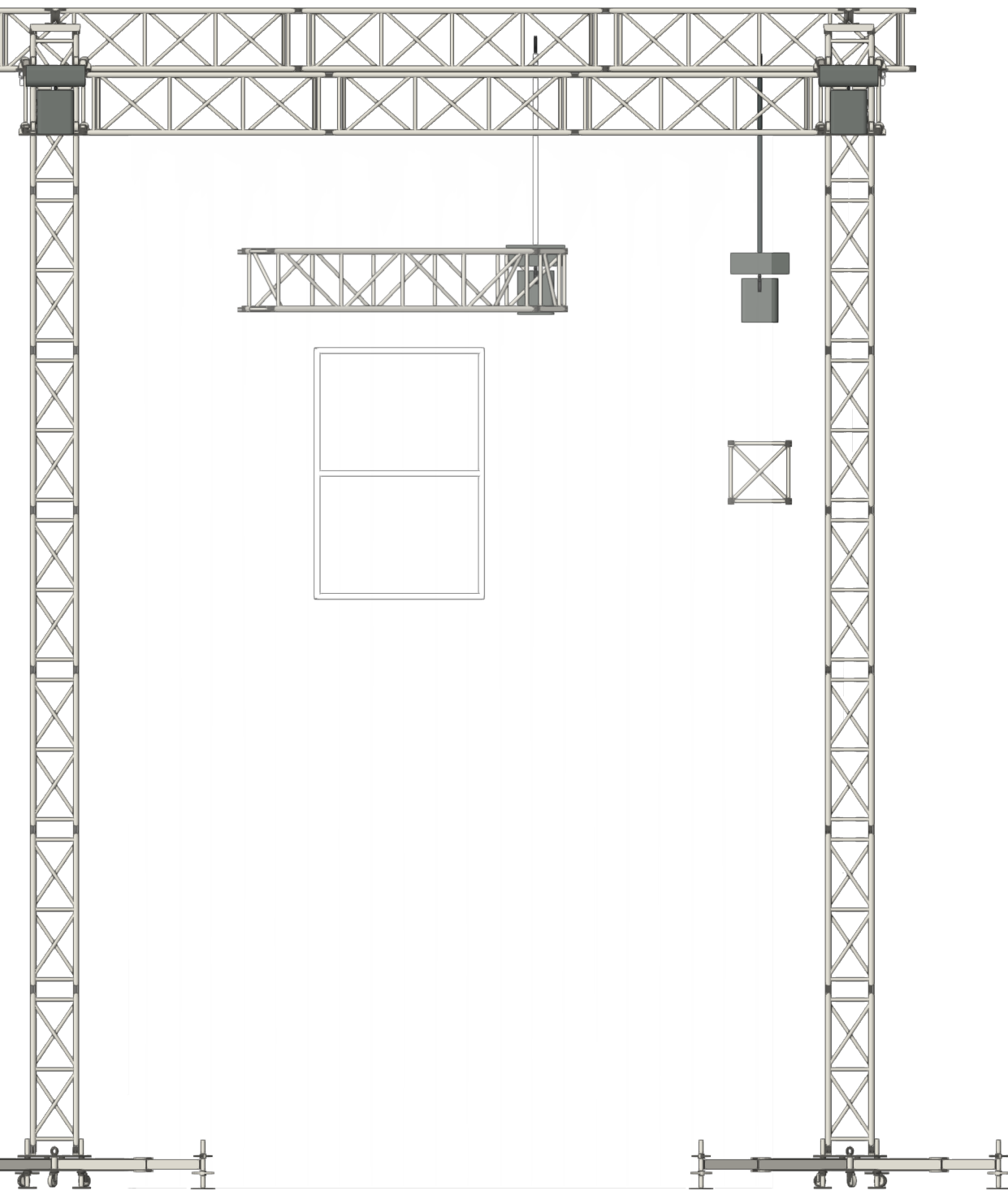
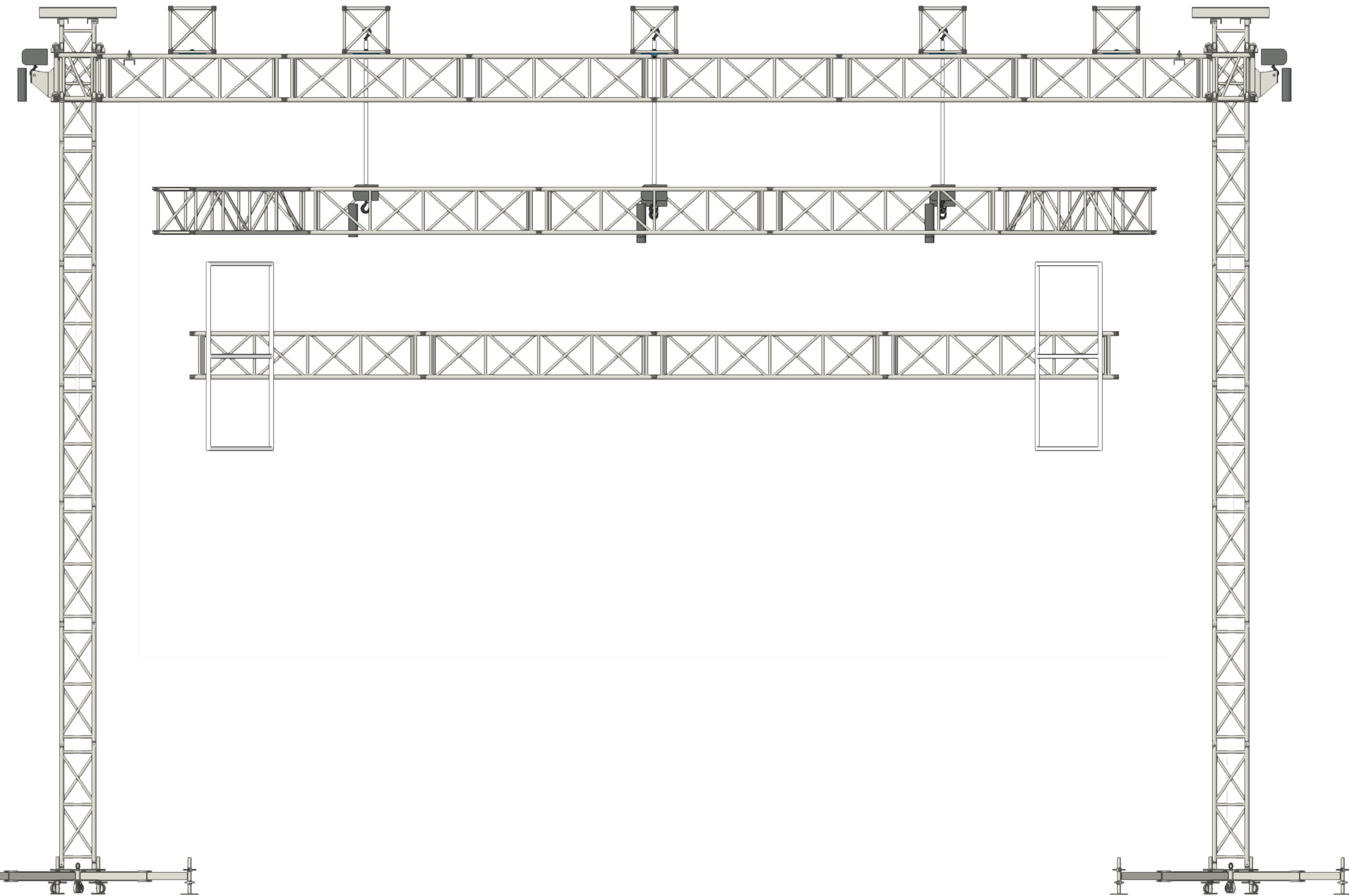
Studio di fattibilità - 15/02/02021



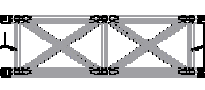




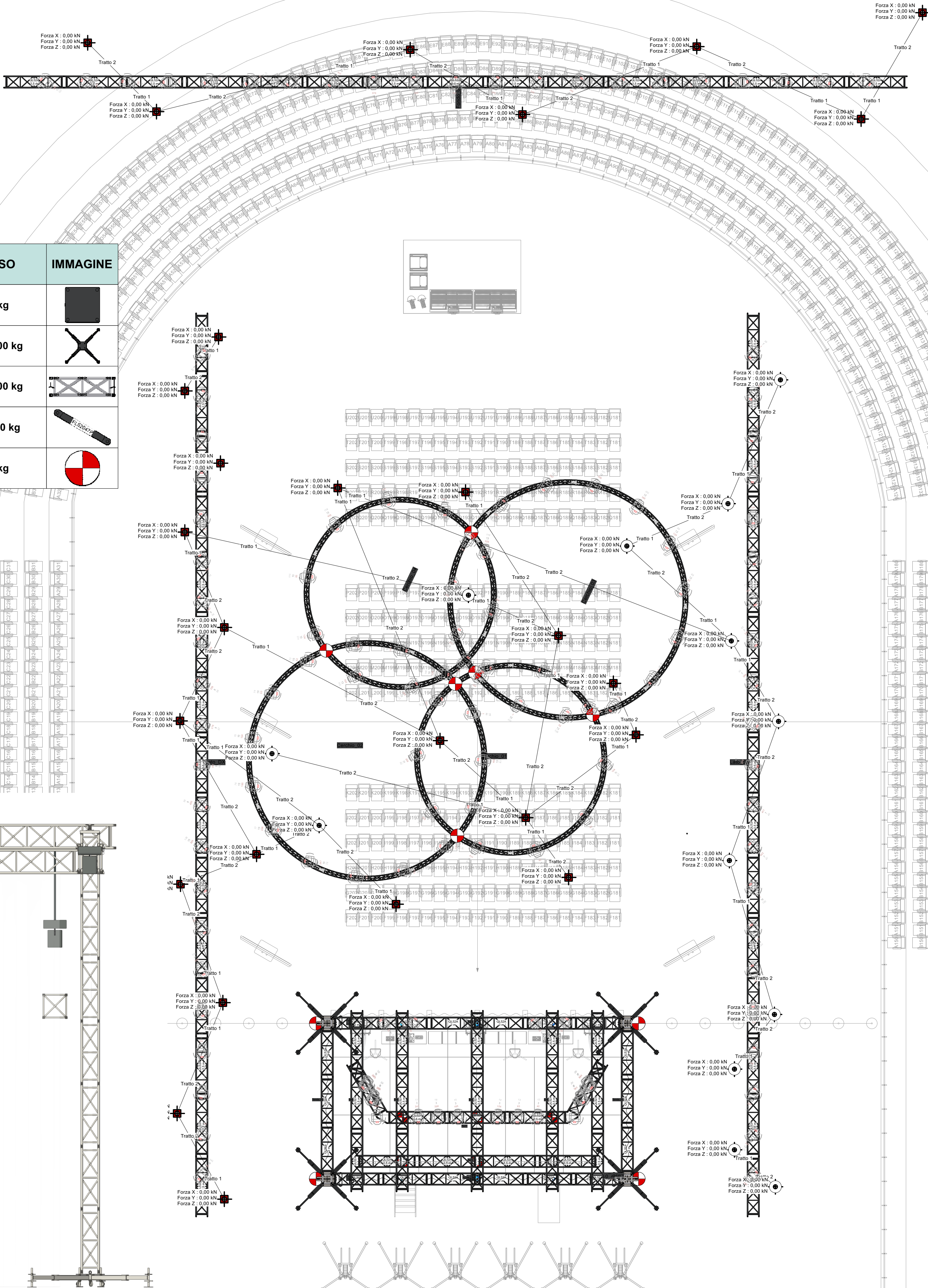
committente: Jordan Peele				
oggetto: Videocom Arena				
descrizione tavola: [Rigging]		revisione: Verifica funzionalità base spotlight		
ID:	SV_10	scale:	controllo:	data: 15/02/21
		il direttore lavori:		tavola: 2 di 7




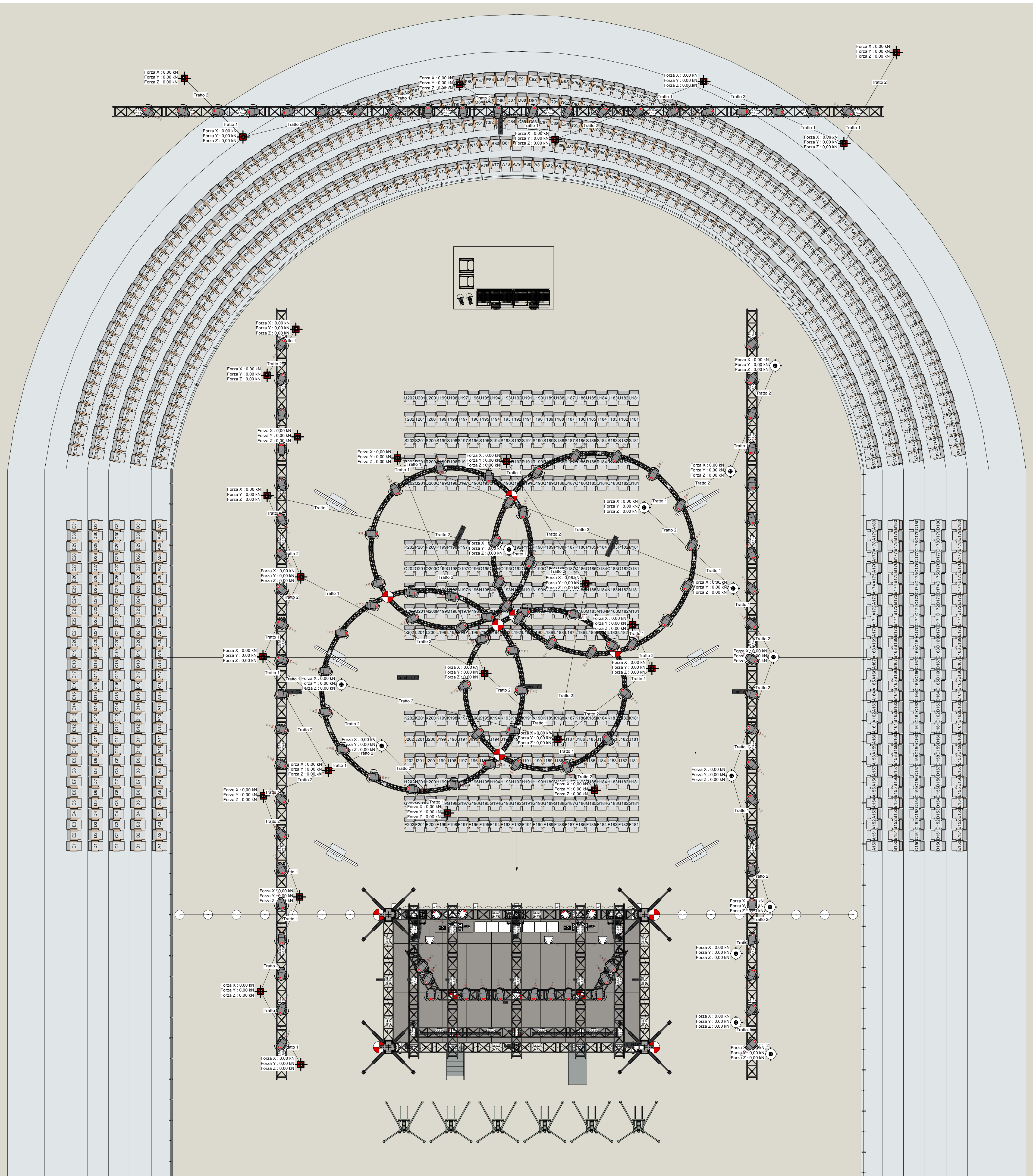
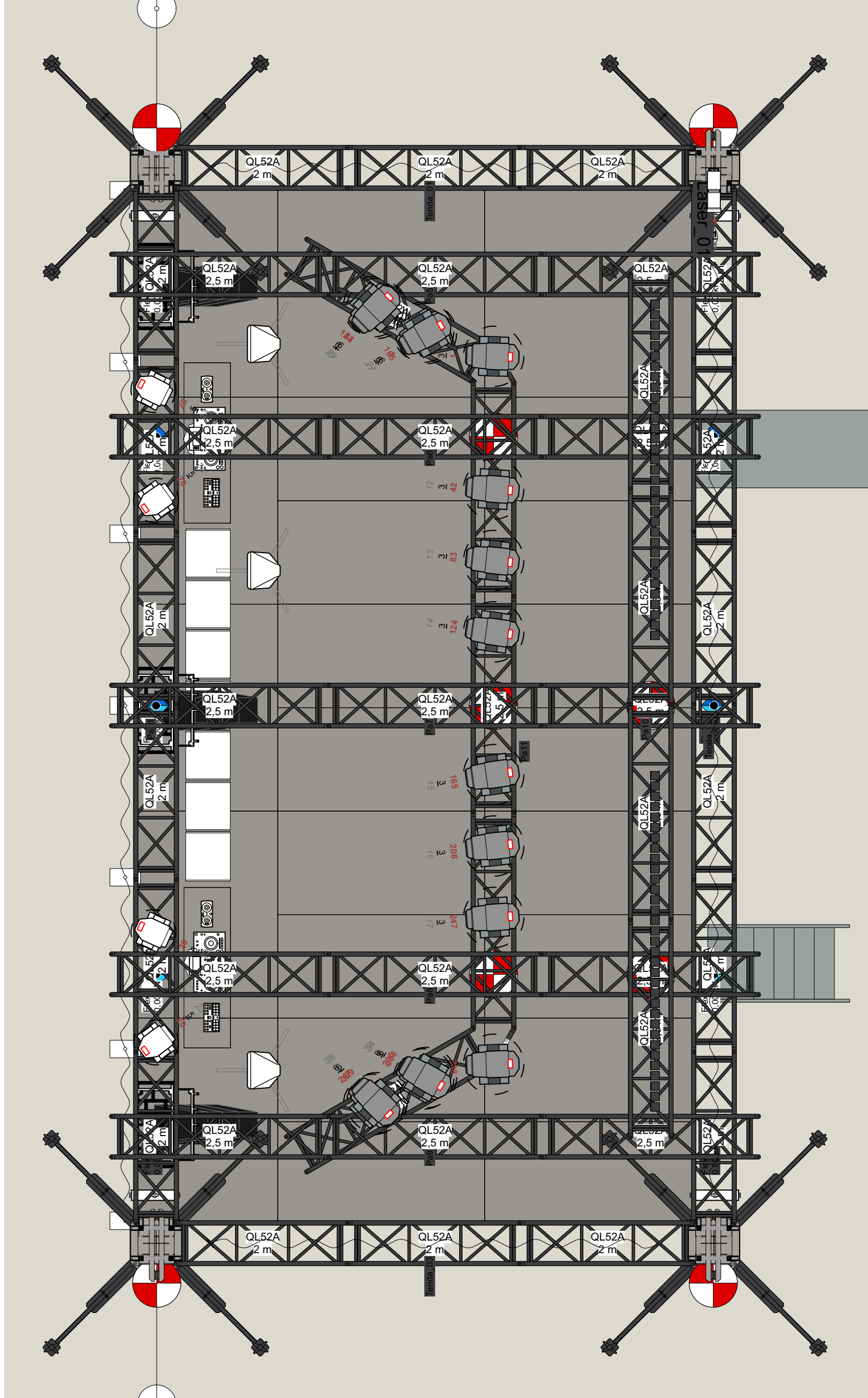
Studio di fattibilità - 15/02/02021




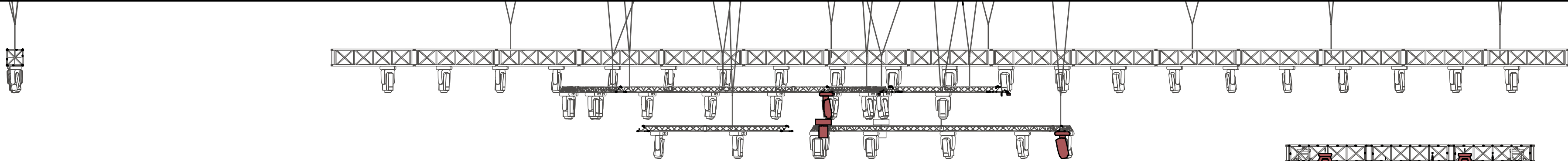
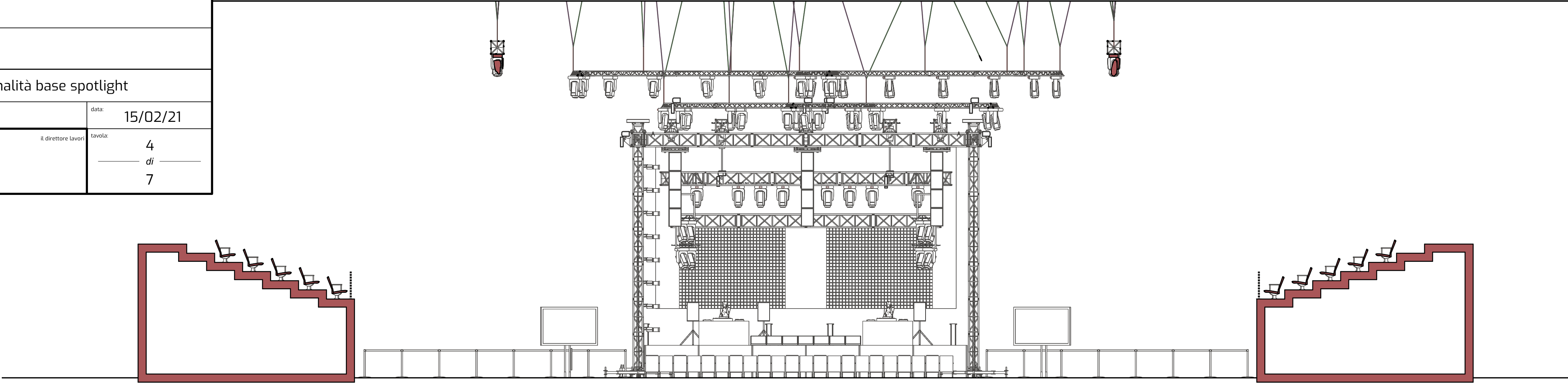
PROFILO	QUANTITÀ	PESO	IMMAGINE
QH40SA-FP40QH	4	0 kg	
MTB40	4	280000 kg	
QL40A-130A	21	367500 kg	
QL52A-FL52047P	4	17600 kg	
	150	0 kg	



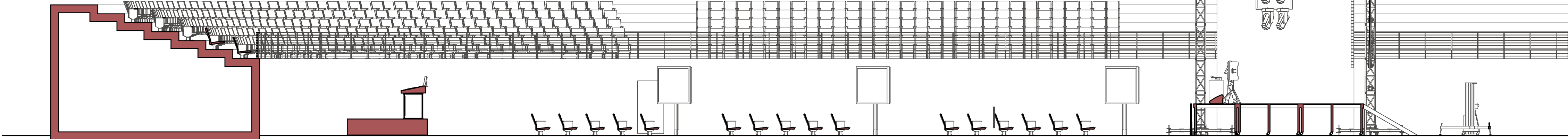
committente:					Jordan Peele							
oggetto:					Videocom Arena							
descrizione tavola:					[Planimetria generale] revisione: Verifica funzionalità base spotlight							
ID:		SV_10		scale:		controllo:		data:		15/02/21		
il direttore lavori:					tavola:		3		di		7	
												



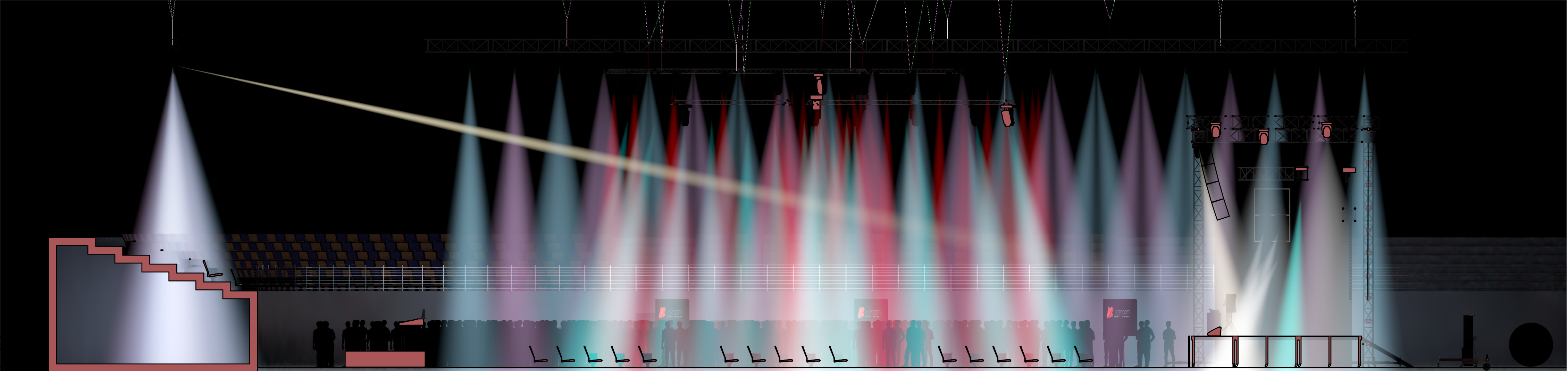
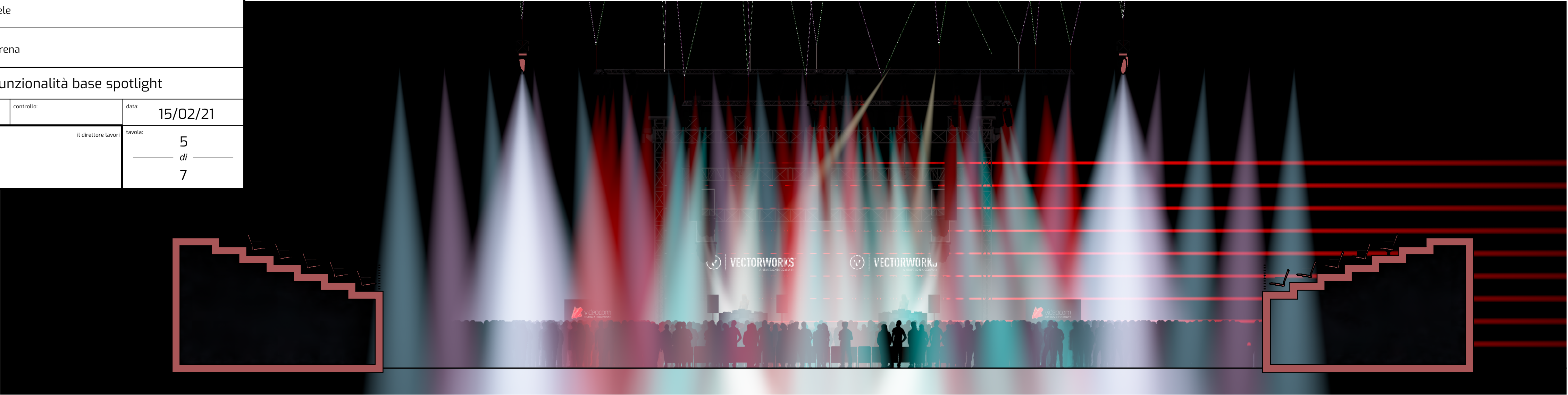
committente:				Jordan Peele			
oggetto:				Videocom Arena			
descrizione tavola:		[Sezioni]	revisione:		Verifica funzionalità base spotlight		
ID:		SV_10	scala:		controllo:		data: 15/02/21
 0383.366712 www.videocom.it			il direttore lavori			tavola:	
						4	
						di	
						7	



Studio di fattibilità - 15/02/02021



committente:			
Jordan Peele			
oggetto:			
Videocom Arena			
descrizione tavola:		revisione:	
[Sezioni]		Verifica funzionalità base spotlight	
ID:	SV_10	scala:	data: 15/02/21
il direttore lavori		tavola:	
5		di	
7			



committente:

Jordan Peele

oggetto:

Videocom Arena

descrizione tavola:

[Luci]

revisione:

Verifica funzionalità base spotlight

id:

SV_10

scale:

controllo:

data:

15/02/21

videocom

0393.366712 | www.videocom.it

il direttore lavori

tavola:

6

di

7

Luce

ABD A59Z @ 650w 9

Luce mobile

Robe Robin 600E Wash @ 750w 13

Robe Robin BMFL Spot @ 2kw 129

Tipico

Sommario colori

Colore	Dim.	Q.tà
(0,255,255)	Robe Robin BMFL Spot	20
(22,174,165)	Robe Robin BMFL Spot	8
(221,0,0)	Robe Robin BMFL Spot	30
(255,0,0)	155mm	9
(255,244,204)	Robe Robin BMFL Spot	2
M490-3 - Speedboat	Robe Robin BMFL Spot	32
P100-4 - Lovers Knot	Robe Robin BMFL Spot	29
R0	Robe Robin BMFL Spot	8

